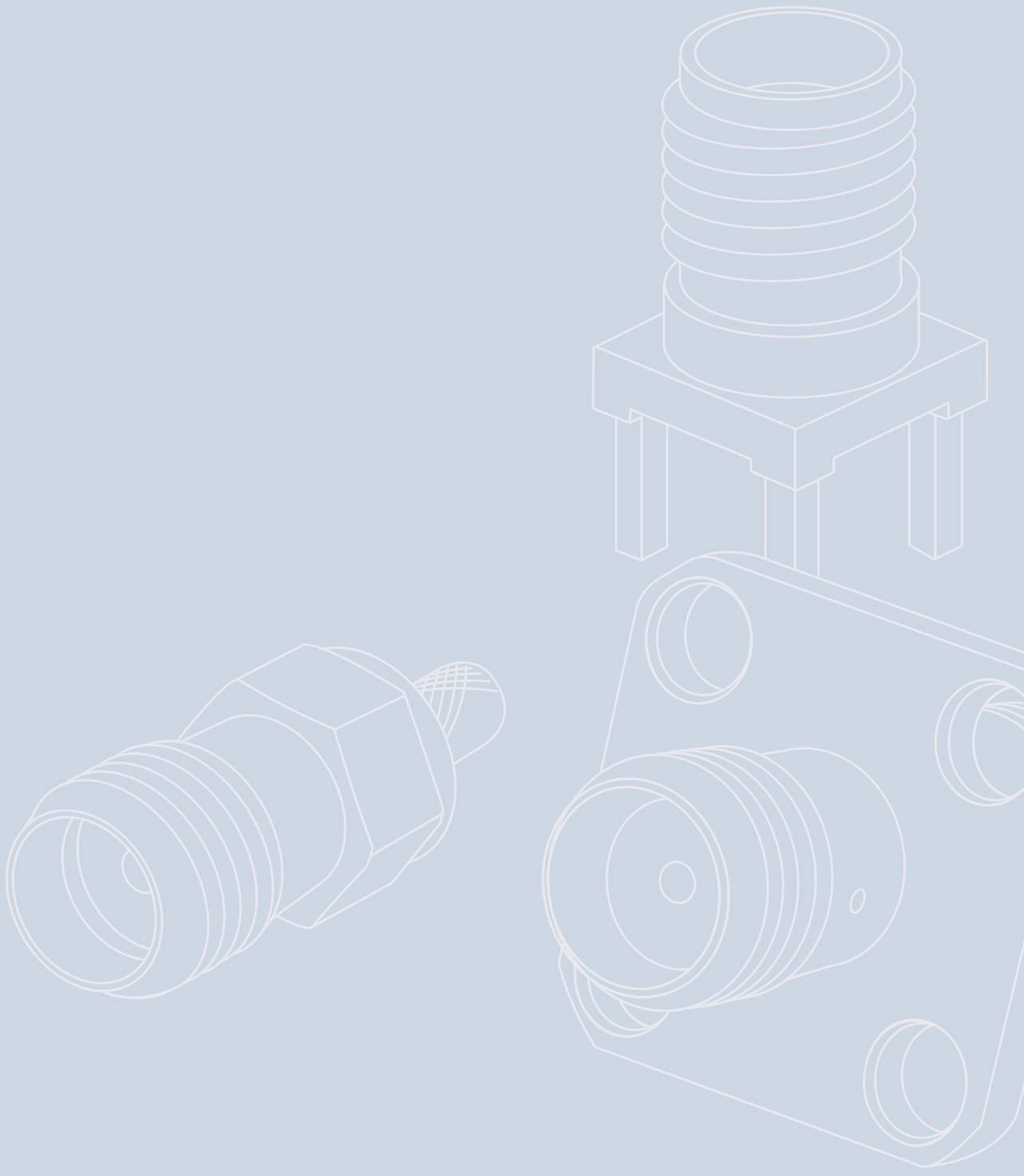


# 8

## SMA SMA





# SMA SMA

- 8.1 SMA Straight Plug.....160
- 8.2 SMA Straight Plug Crimp .....160
- 8.3 SMA Angle Plug.....161
- 8.4 SMA Angle Plug Crimp .....162
- 8.5 SMA Panel Receptacle, male .....162
- 8.6 SMA Straight Jack.....163
- 8.7 SMA Straight Jack Crimp.....163
- 8.8 SMA Bulkhead Jack.....164
- 8.9 SMA Bulkhead Jack Crimp .....164
- 8.10 SMA Bulkhead Receptacle, female .....165
- 8.11 SMA Panel Socket.....167
- 8.12 SMA Angle Panel Socket.....169
- 8.13 SMA Receptacle, female,  
for Printed Circuits in Press-In Technology .....169
- 8.14 SMA Receptacle, female, for Printed Circuits...170
- 8.15 SMA Angle Bulkhead Receptacle,  
female, for Printed Circuits.....170
- 8.16 SMA Angle Receptacle, female,  
for Printed Circuits .....171
- 8.17 SMA End Launcher for PCB .....171
- 8.18 SMA Edge-Mount Jack in SMT .....172
- 8.19 SMA-Edge-Mount Bulkhead Receptacle,  
female, in SMT.....172
- 8.20 SMA Adaptor.....172
- 8.21 SMA Angle Adaptor.....173
- 8.22 SMA Bulkhead Adaptor .....173
- 8.23 SMA Panel Adaptor .....174
- 8.24 SMA T Adaptor.....174
- 8.25 SMA Surge Suppressor.....175
- 8.26 SMA Dust Cap .....175
- 8.27 SMA Termination Plug .....176

- 8.1 SMA-Kabelstecker.....160
- 8.2 SMA-Kabelstecker Crimp.....160
- 8.3 SMA-Kabelwinkelstecker.....161
- 8.4 SMA-Kabelwinkelstecker Crimp.....162
- 8.5 SMA-Einbaustecker mit Flansch .....162
- 8.6 SMA-Kabelbuchse.....163
- 8.7 SMA-Kabelbuchse Crimp.....163
- 8.8 SMA-Kabeleinbaubuchse .....164
- 8.9 SMA-Kabeleinbaubuchse Crimp .....164
- 8.10 SMA-Einbaubuchse.....165
- 8.11 SMA-Einbaubuchse mit Flansch.....167
- 8.12 SMA-Winkeleinbaubuchse mit Flansch .....169
- 8.13 SMA-Buchse für gedruckte Schaltungen  
in Einpresstechnik .....169
- 8.14 SMA-Buchse für gedruckte Schaltungen .....170
- 8.15 SMA-Winkeleinbaubuchse für  
gedruckte Schaltungen .....170
- 8.16 SMA-Winkelbuchse für gedruckte  
Schaltungen.....171
- 8.17 SMA-End-Launch Buchse für Leiterplatten .....171
- 8.18 SMA-Edge-Mount Buchse in SMT .....172
- 8.19 SMA-Edge-Mount Einbaubuchse in SMT .....172
- 8.20 SMA-Kupplung .....172
- 8.21 SMA-Winkelkupplung .....173
- 8.22 SMA-Verbindungsstück.....173
- 8.23 SMA-Einbaukupplung mit Flansch.....174
- 8.24 SMA-T-Stück .....174
- 8.25 SMA Überspannungsableiter.....175
- 8.26 SMA-Abdeckkappe .....175
- 8.27 SMA-Abschlusswiderstand .....176

The SMA series is a very popular coax connector with threaded coupling, and can be used up to frequencies of over 18 GHz (depending on type). The impedance is controlled at 50 Ω. Connector styles are available for flexible, conformable and semi-rigid cable types. Versions of the SMA connector are available for mounting to printed circuit boards using both through-hole soldered and through-hole press-fit techniques, as well as surface mount types (SMD). Solder, crimp and clamp techniques are used to terminate this series to cables. SMA applications include communications, satellite and test equipment.

Mating face sealing for SMA connectors between plug and jack (mated) according to IP 68. This classification is a general statement for the relevant series. Individual connectors may deviate from the values shown. If in doubt, please consult our engineers.

Die Serie SMA umfasst sehr häufig verwendete koaxiale Steckverbindungen mit Schraubverschluss. Sie können je nach Ausführung bis zu einer Frequenz von 18 GHz eingesetzt werden. Der Wellenwiderstand beträgt 50 Ω. Steckverbindervarianten gibt es für flexible, Semi-Flex- und Semi-Rigid-Kabel. Die Leiterplattensteckverbinder der Serie SMA sind als Löt- bzw. Einpresstypen erhältlich. Kabel werden je nach Ausführung durch Crimpen, Klemmen oder Löten angeschlossen. SMA-Steckverbinder werden unter anderem im Mobilfunk, in Satelliten und in der Meßtechnik eingesetzt.

Diese Steckverbinder erfüllen die Querdichtigkeit im Steckgesicht zwischen Stecker und Buchse im gesteckten Zustand gemäß IP 68. Diese Schutzklasse ist pauschal für die Serie SMA festgelegt worden. Für einzelne Steckverbindungen kann es zu Abweichungen kommen. Im Zweifelsfall bitte anfragen.

**Mechanical Characteristics**

|  |                               |   |
|--|-------------------------------|---|
| Durability (mating cycles).....  | ≥ 500 .....                   | Lebensdauer (Steckungen)  |
| Recommended coupling torque .....  | .79 - 113 Ncm .....           | Empfohlenes Kupplungsdrehmoment   |
| Material: Spring contacts .....  | CuBe2 .....                   | Werkstoff: Federnde Kontaktteile  |
| Material: Solid contact parts standard type.....                                 | CuZn39Pb3 .....               | Werkstoff: Nichtfedernde Kontaktteile Standard-Ausführung                     |
| Material: Solid contact parts MIL-type (stainless steel).....                    | 1.4305 .....                  | Werkstoff: Nichtfedernde Kontaktteile MIL-Ausführung (Edelstahl)              |
| Material: Crimp ferrule.....   | Cu .....                      | Werkstoff: Crimprohr  |
| Material: Serrated lock washer .....   | CuSn6 .....                   | Werkstoff: Fächerscheibe  |
| Material: Insulators.....  | PTFE .....                    | Werkstoff: Isolierteile   |
| Material: Gaskets.....   | Silicone .....                | Werkstoff: Dichtungen   |
| Finish: Inner conductor .....  | Cu1Ni2Au1.27 .....            | Oberfläche: Innenleiter   |
| Finish outer conductor: Gold plated (standard; last digit ...1).....             | Cu1Ni2Au0.8; NiPAu .....      | Oberfläche Außenleiter: Gold beschichtet (Standard; Endziffer ...1)           |
| Finish outer conductor: MIL gold plated (last digit ...2).....                   | Cu1Ni2Au1.27 .....            | Oberfläche Außenleiter: MIL Gold beschichtet (Endziffer ...2)                 |
| Finish outer conductor: Stainless steel (last digit ...6).....                   | passivated / passiviert ..... | Oberfläche Außenleiter: Edelstahl (MIL-Ausführung; Endziffer ...6)            |
| Finish outer conductor: Type for printed circuits (last digit ...7) .....        | SnPb8 .....                   | Oberfläche Außenleiter: Leiterplatten-Ausführung (Endziffer ...7)             |
| Finish outer conductor: Telealloy (white bronze) plated (last digit ...8) .....  | CuSnZn3 .....                 | Oberfläche Außenleiter: Telealloy beschichtet (Endziffer ...8)                |
| Finish outer conductor: Nickel plated (last digit ...9).....                     | Cu2Ni5 .....                  | Oberfläche Außenleiter: Nickel beschichtet (Endziffer ...9)                   |
| Finish other metal parts: Gold plated (standard; last digit ...1).....           | Cu2Ni5Au0.2 .....             | Oberfläche sonstiger Metallteile: Gold beschichtet (Standard; Endziffer ...1) |
| Finish other metal parts: MIL gold plated (last digit ...2).....                 | Cu1Ni2Au0.8 .....             | Oberfläche sonstiger Metallteile: MIL Gold beschichtet (Endziffer ...2)       |
| Finish other metal parts: Stainless steel (MIL type; last digit ...6).....       | passivated / passiviert ..... | Oberfläche sonstiger Metallteile: Edelstahl (MIL-Ausführung; Endziffer ...6)  |
| Finish other metal parts: Telealloy (white bronze) plated (last digit...8) ..... | CuSnZn3 .....                 | Oberfläche sonstiger Metallteile: Telealloy beschichtet (Endziffer ...8)      |
| Finish other metal parts: Nickel plated (last digit ...9) .....                  | Cu2Ni5 .....                  | Oberfläche sonstiger Metallteile: Nickel beschichtet (Endziffer ...9)         |
| RoHS compliant .....   | .....                         | RoHS konform  |

**Mechanische Eigenschaften**

**Climatic Characteristics**

|   |                |                                      |
|---|----------------|--------------------------------------|
| Climatic category acc. to IEC 60068 - 1 ..... | 55/155/56..... | Prüfklasse nach DIN IEC 60068 Teil 1 |
|---|----------------|--------------------------------------|

**Thermische und klimatische Eigenschaften**

**Electrical Characteristics**

|   |                    |   |
|---|--------------------|---|
| Impedance.....  | 50 Ω .....         | Wellenwiderstand  |
| Voltage proof.....  | 1 kV/50 Hz .....   | Spannungsfestigkeit   |
| Working voltage .....   | ≤ 335 V/50 Hz..... | Betriebsspannung  |
| Contact resistance inner conductor.....                             | ≤ 3 mΩ .....       | Durchgangswiderstand Innenleiter  |
| Contact resistance outer conductor.....                             | ≤ 2 mΩ .....       | Durchgangswiderstand Außenleiter  |
| Insulation resistance.....  | ≥ 5 GΩ .....       | Isolationswiderstand  |
| Frequency range for flexible cable up to .....                      | 12.4 GHz.....      | Frequenzbereich für flexible Kabel bis                                  |
| Frequency range for semi-rigid cable up to (Straight style).....    | 18.0 GHz.....      | Frequenzbereich für Festmantelkabel bis (Gerade Ausführung)             |
| Frequency range for semi-rigid cable up to (Angle style).....       | 12.4 GHz.....      | Frequenzbereich für Festmantelkabel bis (Winkel Ausführung)             |
| Return loss flexible cable (straight and angle style) at 1 GHz..... | ≥ 20.0 dB .....    | Rückflussdämpfung Flexible Kabel (Gerade / Winkel Ausführung) bei 1 GHz |
| Return loss flexible cable (straight and angle style) at 2 GHz..... | ≥ 19.2 dB .....    | Rückflussdämpfung Flexible Kabel (Gerade / Winkel Ausführung) bei 2 GHz |
| Return loss flexible cable (straight and angle style) at 4 GHz..... | ≥ 17.7 dB .....    | Rückflussdämpfung Flexible Kabel (Gerade / Winkel Ausführung) bei 4 GHz |
| Return loss flexible cable (straight and angle style) at 6 GHz..... | ≥ 16.5 dB .....    | Rückflussdämpfung Flexible Kabel (Gerade / Winkel Ausführung) bei 6 GHz |
| Return loss semi-rigid cable (straight style) at 1 GHz.....         | ≥ 28.5 dB .....    | Rückflussdämpfung Festmantelkabel (Gerade Ausführung) bei 1 GHz         |
| Return loss semi-rigid cable (straight style) at 2 GHz.....         | ≥ 27.0 dB .....    | Rückflussdämpfung Festmantelkabel (Gerade Ausführung) bei 2 GHz         |
| Return loss semi-rigid cable (straight style) at 4 GHz.....         | ≥ 26.0 dB .....    | Rückflussdämpfung Festmantelkabel (Gerade Ausführung) bei 4 GHz         |
| Return loss semi-rigid cable (straight style) at 6 GHz.....         | ≥ 24.9 dB .....    | Rückflussdämpfung Festmantelkabel (Gerade Ausführung) bei 6 GHz         |
| Return loss semi-rigid cable (angle style) at 1 GHz.....            | ≥ 25.7 dB .....    | Rückflussdämpfung Festmantelkabel (Winkel Ausführung) bei 1 GHz         |
| Return loss semi-rigid cable (angle style) at 2 GHz.....            | ≥ 25.2 dB .....    | Rückflussdämpfung Festmantelkabel (Winkel Ausführung) bei 2 GHz         |
| Return loss semi-rigid cable (angle style) at 4 GHz.....            | ≥ 24.2 dB .....    | Rückflussdämpfung Festmantelkabel (Winkel Ausführung) bei 4 GHz         |
| Return loss semi-rigid cable (angle style) at 6 GHz.....            | ≥ 23.2 dB .....    | Rückflussdämpfung Festmantelkabel (Winkel Ausführung) bei 6 GHz         |

**Elektrische Eigenschaften**

### Standards

IEC 60 169-15

The Return Loss values shown above correspond to the IEC Standard 60 169-15. In most cases, the RF connectors from Telegärtner fulfill or exceed these requirements. Depending on the design and cable type, however, particular connectors could deviate from the norm. The exact parameters of individual products are available upon request.

### Finish types

| Type.....  | Last Digit | Endziffer..... | Ausführung   |
|--|------------|----------------|--|
| Gold (Standard) .....                            | 1          | .....          | Gold (Standard)                                    |
| MIL-gold.....                                    | 2          | .....          | MIL-Gold   |
| Silver plated.....                               | 4          | .....          | Silber beschichtet                                 |
| Stainless steel, passivated (MIL type) .....     | 6          | .....          | Edelstahl, passiviert (MIL-Ausführung)             |
| Type for printed circuits (tinned terminal)..... | 7          | .....          | Leiterplatten-Ausführung (verzinnter Lötanschluss) |
| Telealloy (white bronze) .....                   | 8          | .....          | Telealloy  |
| Nickel .....                                     | 9          | .....          | Nickel   |

Versions with last digits 1, 8 and 9 are available as standard. Those with last digits 2, 4, 6 and 7 can be manufactured when a defined minimum quantity is ordered.

Die oben angeführten Rückflussdämpfungswerte entsprechen der IEC-Norm 60 169-15. Die Telegärtner-Steckverbinder erfüllen oder übertreffen in den meisten Fällen diese Normwerte. Je nach Ausführung und Kabeltype können einzelne Steckverbinder jedoch abweichen. Die genauen Parameter der einzelnen Produkte sind auf Anfrage erhältlich.

### Oberflächen-Ausführungen

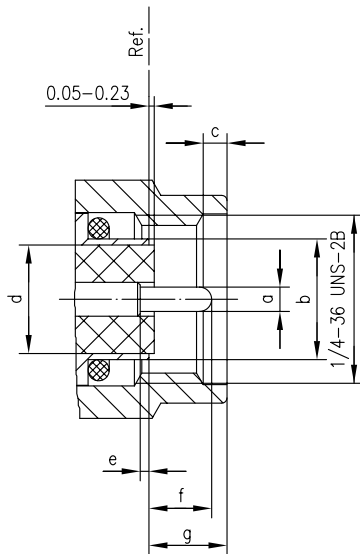
Als Standard werden die Typen mit den Endziffern 1 und 8 bzw. 9 angeboten. Die Typen mit den Endziffern 2, 4, 6 und 7 können auf Anfrage bei Einhaltung einer Mindestbestellmenge geliefert werden.

### Normen

IEC 60 169-15

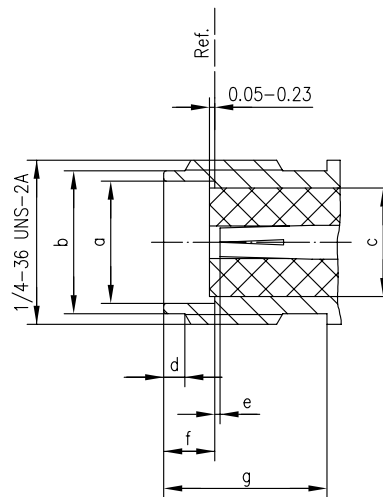
**SMA Mating Face**  
**SMA-Steckgesicht**

**Plug**  
**Stecker**

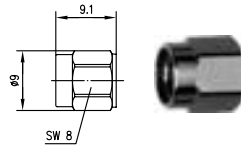


|   | [inch] |       | [mm]  |       |
|---|--------|-------|-------|-------|
|   | min.   | max.  | min.  | max.  |
| a | 0.035  | 0.037 | 0.902 | 0.940 |
| b | -      | 0.181 | -     | 4.59  |
| c | 0.015  | 0.045 | 0.38  | 1.14  |
| d | -      | 0.165 | -     | 4.178 |
| e | 0.0    | -     | 0.0   | -     |
| f | -      | 0.100 | -     | 2.54  |
| g | -      | 0.135 | -     | 3.43  |
| h | -      | 0.135 | -     | 3.43  |

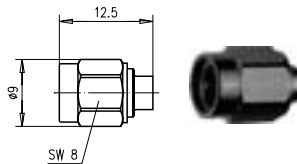
**Jack**  
**Buchse**



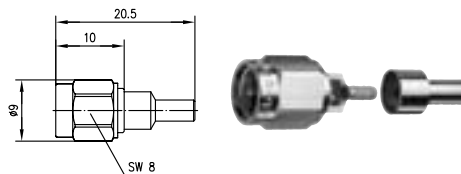
|   | [inch] |       | [mm] |       |
|---|--------|-------|------|-------|
|   | min.   | max.  | min. | max.  |
| a | 0.181  | 0.184 | 4.60 | 4.67  |
| b | 0.208  | 0.216 | 5.28 | 5.49  |
| c | -      | 0.165 | -    | 4.178 |
| d | 0.015  | 0.045 | 0.38 | 1.14  |
| e | 0.0    | 0.016 | 0.0  | 0.41  |
| f | 0.074  | 0.078 | 1.88 | 1.98  |
| g | 0.218  | -     | 5.54 | -     |
| h | 0.218  | -     | 5.54 | -     |

SMA Straight Plug  
SMA-Kabelstecker

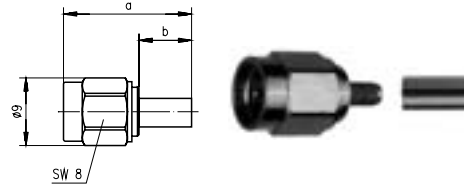
| Order No.<br>Bestell-Nr. | Cable group; cable<br>Kabelgruppe; Kabel | Finish<br>Oberfläche   | Remarks<br>Anmerkungen                                   | Assembly<br>Montage |
|--------------------------|--|------------------------|--|---------------------|
| J01150B0111              | G10 (UT-141)                             | Gold                   | without inner conductor IP 68<br>ohne Innenleiter, IP 68 | C28                 |
| J01150A0118              | G10 (UT-141)                             | Tealloy (white bronze) | without inner conductor IP 68<br>ohne Innenleiter, IP 68 | C16                 |



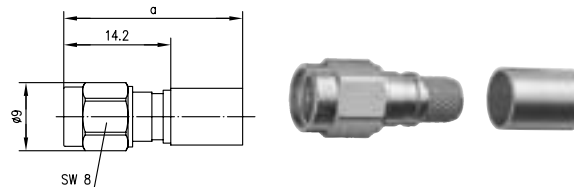
| Order No.<br>Bestell-Nr. | Cable group; cable<br>Kabelgruppe; Kabel | Finish<br>Oberfläche | Remarks<br>Anmerkungen                               | Assembly<br>Montage |
|--------------------------|--|----------------------|--|---------------------|
| J01150A0121              | G11 (UT-85)                              | Gold                 | with inner conductor IP 68<br>mit Innenleiter, IP 68 | C01                 |
| J01150A0131              | G10 (UT-141)                             | Gold                 | with inner conductor IP 68<br>mit Innenleiter, IP 68 | C01                 |

SMA Straight Plug Crimp  
SMA-Kabelstecker Crimp

| Order No.<br>Bestell-Nr. | Cable group; cable<br>Kabelgruppe; Kabel | Finish<br>Oberfläche | Remarks<br>Anmerkungen  | Assembly<br>Montage | Crimp die<br>Crimpeinsatz |
|--------------------------|--|----------------------|---|---------------------|---------------------------|
| J01150A0601              | G3 (RG-178B/U)                           | Gold                 | solder/crimp; >17 dB/2 GHz; >12 dB/4 GHz<br>löt/crimp; >17 dB/2 GHz; >12 dB/4 GHz | C1013               | N01001A0009               |

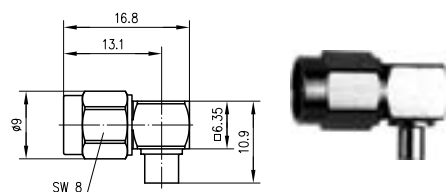


| Order No.<br>Bestell-Nr. | Cable group; cable<br>Kabelgruppe; Kabel | Finish<br>Oberfläche     | Remarks<br>Anmerkungen    | Dimensions<br>Abmessungen | Assembly<br>Montage | Crimp die<br>Crimpeinsatz |
|--------------------------|--|--------------------------|---------------------------|---------------------------|---------------------|---------------------------|
| J01150A0011              | G7 (RG-316/U)                            | Gold                     | solder/crimp<br>löt/crimp | a=17, b=7                 | C0103               | N01001A0009               |
| J01150A0018              | G7 (RG-316/U)                            | Telealloy (white bronze) | solder/crimp<br>löt/crimp | a=17, b=7                 | C0103               | N01001A0009               |
| J01150A0019              | G7 (RG-316/U)                            | Nickel                   | solder/crimp<br>löt/crimp | a=17, b=7                 | C0103               | N01001A0009               |
| J01150A0021              | G8 (RD-316)                              | Gold                     | solder/crimp<br>löt/crimp | a=17, b=7                 | C0114               | N01001A0014               |
| J01150A0028              | G8 (RD-316)                              | Telealloy (white bronze) | solder/crimp<br>löt/crimp | a=17, b=7                 | C0114               | N01001A0014               |
| J01150A0029              | G8 (RD-316)                              | Nickel                   | solder/crimp<br>löt/crimp | a=17, b=7                 | C0114               | N01001A0014               |
| J01150A0041              | G1 (RG-58C/U)                            | Gold                     | solder/crimp<br>löt/crimp | a=23.3, b=13              | C0105               | N01001A0005               |
| J01150A0049              | G1 (RG-58C/U)                            | Nickel                   | solder/crimp<br>löt/crimp | a=23.3, b=13              | C0105               | N01001A0005               |
| J01150A0031              | G5 (RG-223/U);<br>RG-142B/U              | Gold                     | solder/crimp<br>löt/crimp | a=23.8, b=13.5            | C0105               | N01001A0005               |
| J01150A0038              | G5 (RG-223/U);<br>RG-142B/U              | Telealloy (white bronze) | solder/crimp<br>löt/crimp | a=23.8, b=13.5            | C0105               | N01001A0005               |
| J01150A0039              | G5 (RG-223/U);<br>RG-142B/U              | Nickel                   | solder/crimp<br>löt/crimp | a=23.8, b=13.5            | C0105               | N01001A0005               |

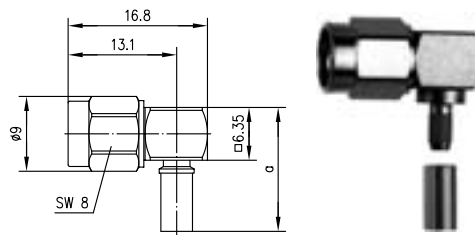


| Order No.<br>Bestell-Nr. | Cable group; cable<br>Kabelgruppe; Kabel | Finish<br>Oberfläche     | Remarks<br>Anmerkungen | Dimensions<br>Abmessungen | Assembly<br>Montage | Crimp die<br>Crimpeinsatz |
|--------------------------|--|--------------------------|------------------------|---------------------------|---------------------|---------------------------|
| J01150A0641              | G44 (1.1/2.95)                           | Gold                     | crimp/crimp            | a=27.2                    | C2705               | N01001A0005               |
| J01150A0611              | G30 (1.5/3.8)                            | Gold                     | crimp/crimp            | a=23.7                    | C2731               | N01001A0056               |
| J01150A0618              | G30 (1.5/3.8)                            | Telealloy (white bronze) | crimp/crimp            | a=23.7                    | C2731               | N01001A0056               |

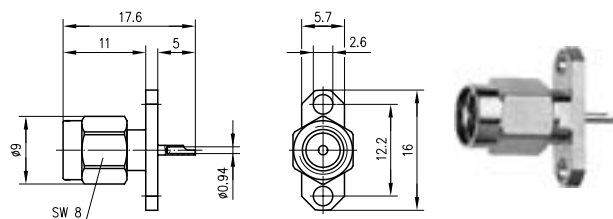
### SMA Angle Plug SMA-Kabelwinkelstecker



| Order No.<br>Bestell-Nr. | Cable group; cable<br>Kabelgruppe; Kabel | Finish<br>Oberfläche | Remarks<br>Anmerkungen                   | Assembly<br>Montage |
|--------------------------|--|----------------------|--|---------------------|
| J01150A0141              | G11 (UT-85)                              | Gold                 | >34 dB/1 GHz; >30 dB/2 GHz; >24 dB/4GHz  | C02                 |
| J01150A0151              | G10 (UT-141)                             | Gold                 | >39 dB/1 GHz; >35 dB/2 GHz; >30 dB/4 GHz | C02                 |

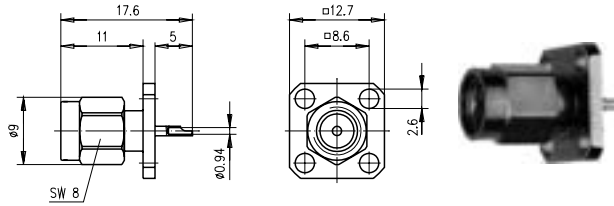
SMA Angle Plug Crimp  
SMA-Kabelwinkelstecker Crimp

| Order No.<br>Bestell-Nr. | Cable group; cable<br>Kabelgruppe; Kabel | Finish<br>Oberfläche      | Remarks<br>Anmerkungen                         | Dimensions<br>Abmessungen | Crimp die<br>Crimpeinsatz | Assembly<br>Montage |
|--------------------------|--|---------------------------|--|---------------------------|---------------------------|---------------------|
| J01150A0541              | G3 (RG-178B/U)                           | Gold                      |  | a=14.9                    | N01001A0010               | C0413               |
| J01150A0549              | G3 (RG-178B/U)                           | Nickel                    |  | a=14.9                    | N01001A0010               | C0413               |
| J01150A0061              | G7 (RG-316/U)                            | Gold                      | >29 dB/1 GHz; >24.5 dB/<br>2 GHz; >21 dB/4 GHz | a=14.9                    | N01001A0009               | C0403               |
| J01150A0068              | G7 (RG-316/U)                            | Tealloy<br>(white bronze) | >29 dB/1 GHz; >24.5 dB/<br>2 GHz; >21 dB/4 GHz | a=14.9                    | N01001A0009               | C0403               |
| J01150A0069              | G7 (RG-316/U)                            | Nickel                    | >29 dB/1 GHz; >24.5 dB/<br>2 GHz; >21 dB/4 GHz | a=14.9                    | N01001A0009               | C0403               |
| J01150A0071              | G8 (RD-316)                              | Gold                      | >33 dB/1 GHz; 28.5 dB/<br>2 GHz; 25 dB/4GHz    | a=14.9                    | N01001A0014               | C0414               |
| J01150A0078              | G8 (RD-316)                              | Tealloy<br>(white bronze) | >33 dB/1 GHz; 28.5 dB/<br>2 GHz; 25 dB/4GHz    | a=14.9                    | N01001A0014               | C0414               |
| J01150A0079              | G8 (RD-316)                              | Nickel                    | >33 dB/1 GHz; 28.5 dB/<br>2 GHz; 25 dB/4GHz    | a=14.9                    | N01001A0014               | C0414               |
| J01150A0091              | G1 (RG-58C/U);<br>1.0/2.95 AF            | Gold                      | >39 dB/1 GHz; >35 dB/<br>2 GHz; >28 dB/4 GHz   | a=20.9                    | N01001A0005               | C0405               |
| J01150A0099              | G1 (RG-58C/U);<br>1.0/2.5 AF             | Nickel                    | >39 dB/1 GHz; >35 dB/<br>2 GHz; >28 dB/4 GHz   | a=20.9                    | N01001A0005               | C0405               |
| J01150A0081              | G5 (RG-223/U);<br>RG-142B/U; 1.0/2.95 AF | Gold                      | >39 dB/1 GHz; >35 dB/<br>2 GHz; >28 dB/4 GHz   | a=21.4                    | N01001A0005               | C0405               |
| J01150A0088              | G5 (RG-223/U);<br>RG-142B/U; 1.0/2.95 AF | Tealloy<br>(white bronze) | >39 dB/1 GHz; >35 dB/<br>2 GHz; >28 dB/4 GHz   | a=21.4                    | N01001A0005               | C0405               |
| J01150A0089              | G5 (RG-223/U);<br>RG-142B/U; 1.0/2.95 AF | Nickel                    | >39 dB/1 GHz; >35 dB/<br>2 GHz; >28 dB/4 GHz   | a=21.4                    | N01001A0005               | C0405               |
| J01150A0521              | G30 (1.5/3.8);<br>LMR-240                | Gold                      |  | a=21.9                    | N01001A0056               | C0431               |

SMA Panel Receptacle, male  
SMA-Einbaustecker mit Flansch

| Order No.<br>Bestell-Nr. | Finish<br>Oberfläche | Mount. dim.<br>Einbaumaß |
|--------------------------|----------------------|--------------------------|
| J01150A0161              | Gold                 | Z28                      |

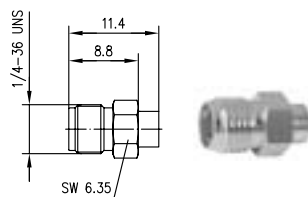




| Order No.<br>Bestell-Nr. | Finish<br>Oberfläche | Mount. dim.<br>Einbaumaß |
|--------------------------|----------------------|--------------------------|
| J01150A0191              | Gold                 | Z29                      |

SMA Straight Jack  
SMA-Kabelbuchse

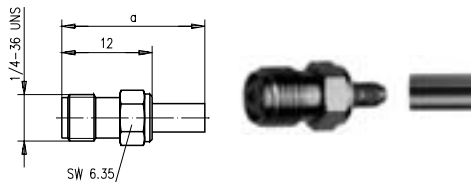
8.6



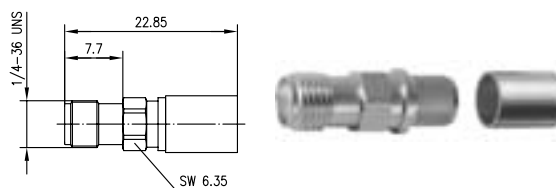
| Order No.<br>Bestell-Nr. | Cable group; cable<br>Kabelgruppe; Kabel | Finish<br>Oberfläche | Assembly<br>Montage |
|--------------------------|--|----------------------|---------------------|
| J01151A1181              | G10 (UT-141)                             | Gold                 | C27                 |

SMA Straight Jack Crimp  
SMA-Kabelbuchse Crimp

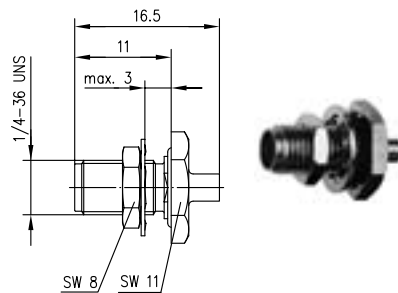
8.7



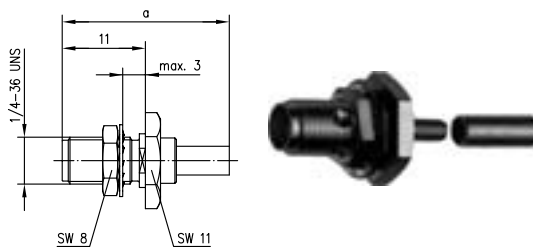
| Order No.<br>Bestell-Nr. | Cable group; cable<br>Kabelgruppe; Kabel | Finish<br>Oberfläche   | Dimensions<br>Abmessungen | Assembly<br>Montage | Crimp die<br>Crimpeinsatz |
|--------------------------|--|------------------------|---------------------------|---------------------|---------------------------|
| J01151A0051              | G7 (RG-316/U)                            | Gold                   | a=19                      | C0703               | N01001A0009               |
| J01151A0058              | G7 (RG-316/U)                            | Tealloy (white bronze) | a=19                      | C0703               | N01001A0009               |
| J01151A0059              | G7 (RG-316/U)                            | Nickel                 | a=19                      | C0703               | N01001A0009               |
| J01151A0351              | G8 (RD-316)                              | Gold                   | a=19                      | C0714               | N01001A0014               |
| J01151A0491              | G1 (RG-58C/U)                            | Gold                   | a=25                      | C0705               | N01001A0005               |
| J01151A0611              | G5 (RG-223/U);<br>RG-142B/U              | Gold                   | a=25.5                    | C0705               | N01001A0005               |



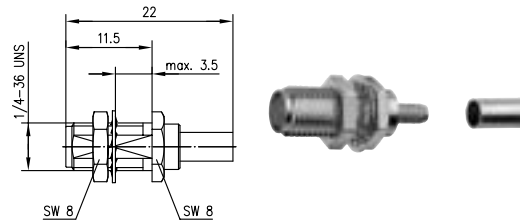
| Order No.<br>Bestell-Nr. | Cable group; cable<br>Kabelgruppe; Kabel | Finish<br>Oberfläche | Assembly<br>Montage | Crimp die<br>Crimpeinsatz |
|--------------------------|--|----------------------|---------------------|---------------------------|
| J01151A1061              | G30 (1.5/3.8)                            | Gold                 | C2731               | N01001A0056               |

SMA Bulkhead Jack  
SMA-Kabeleinbaubuchse

| Order No.<br>Bestell-Nr. | Cable group; cable<br>Kabelgruppe; Kabel | Finish<br>Oberfläche | Remarks<br>Anmerkungen                       | Mount. dim.<br>Einbaumaß | Assembly<br>Montage |
|--------------------------|--|----------------------|--|--------------------------|---------------------|
| J01151A0061              | G11 (UT-85)                              | Gold                 | with panel seal IP 68<br>mit Dichtring IP 68 | Z27                      | C18                 |
| J01151A0911              | G10 (UT-141)                             | Gold                 | with panel seal IP 68<br>mit Dichtring IP 68 | Z27                      | C18                 |

SMA Bulkhead Jack Crimp  
SMA-Kabeleinbaubuchse Crimp

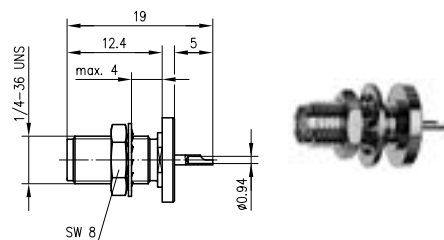
| Order No.<br>Bestell-Nr. | Cable group;<br>cable<br>Kabelgruppe;<br>Kabel | Finish<br>Oberfläche      | Remarks<br>Anmerkungen                       | Dimensions<br>Abmessungen | Mount. dim.<br>Einbaumaß | Assembly<br>Montage | Crimp die<br>Crimpeinsatz |
|--------------------------|--|---------------------------|--|---------------------------|--------------------------|---------------------|---------------------------|
| J01151A0001              | G7 (RG-316/U)                                  | Gold                      |  | a=22                      | Z27                      | C0803               | N01001A0009               |
| J01151A0009              | G7 (RG-316/U)                                  | Nickel                    |  | a=22                      | Z27                      | C0803               | N01001A0009               |
| J01151A0541              | G7 (RG-316/U)                                  | Gold                      | with panel seal IP 68<br>mit Dichtring IP 68 | a=22                      | Z27                      | C0803               | N01001A0009               |
| J01151A0549              | G7 (RG-316/U)                                  | Nickel                    | with panel seal IP 68<br>mit Dichtring IP 68 | a=22                      | Z27                      | C0803               | N01001A0009               |
| J01151A0221              | G8 (RD-316)                                    | Gold                      |  | a=22                      | Z27                      | C0814               | N01001A0014               |
| J01151A0229              | G8 (RD-316)                                    | Nickel                    |  | a=22                      | Z27                      | C0814               | N01001A0014               |
| J01151A0601              | G8 (RD-316)                                    | Gold                      | with panel seal<br>mit Dichtring             | a=22                      | Z27                      | C0814               | N01001A0014               |
| J01151A0401              | G1 (RG-58C/U)                                  | Gold                      |  | a=26                      | Z27                      | C0805               | N01001A0005               |
| J01151A0408              | G1 (RG-58C/U)                                  | Tealloy<br>(white bronze) |  | a=26                      | Z27                      | C0805               | N01001A0005               |
| J01151A0409              | G1 (RG-58C/U)                                  | Nickel                    |  | a=26                      | Z27                      | C0805               | N01001A0005               |
| J01151A1091              | G1 (RG-58C/U)                                  | Gold                      | with panel seal IP 68<br>mit Dichtring IP 68 | a=26                      | Z27                      | C0805               | N01001A0005               |
| J01151A0011              | G5 (RG-223/U);<br>RG-142B/U                    | Gold                      |  | a=26.5                    | Z27                      | C0805               | N01001A0005               |
| J01151A0019              | G5 (RG-223/U);<br>RG-142B/U                    | Nickel                    |  | a=26.5                    | Z27                      | C0805               | N01001A0005               |
| J01151A1111              | G30 (1.5/3.8)                                  | Gold                      | with panel seal<br>mit Dichtring             | A= 22.85                  | Z27                      | C2731               | N01001A0056               |



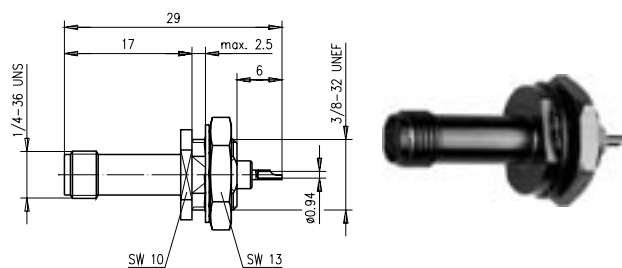
| Order No.<br>Bestell-Nr. | Cable group; cable<br>Kabelgruppe; Kabel | Finish<br>Oberfläche | Mount. dim.<br>Einbaumaß | Assembly<br>Montage |
|--------------------------|--|----------------------|--------------------------|---------------------|
| J01151A0671              | G7 (RG-316/U)                            | Gold                 | Z36                      | C0803               |

**SMA Bulkhead Receptacle, female**  
**SMA-Einbaubuchse**

8.10

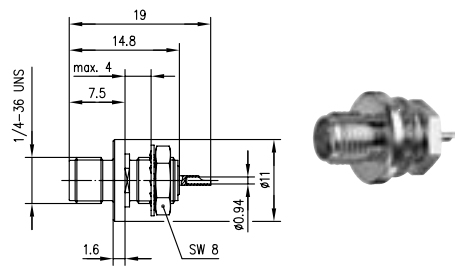


| Order No.<br>Bestell-Nr. | Finish<br>Oberfläche | Remarks<br>Anmerkungen   | Mount. dim.<br>Einbaumaß |
|--------------------------|----------------------|--|--------------------------|
| J01151A0021              | Gold                 | rear mounting<br>Einbau von hinten                               | Z27                      |
| J01151A0031              | Gold                 | rear mounting with panel seal<br>Einbau von hinten mit Dichtring | Z27                      |

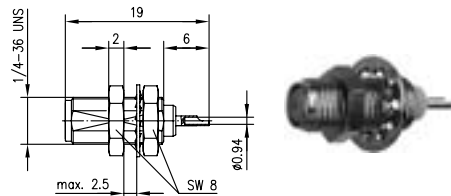


| Order No.<br>Bestell-Nr. | Finish<br>Oberfläche | Remarks<br>Anmerkungen             | Mount. dim.<br>Einbaumaß |
|--------------------------|----------------------|------------------------------------|--------------------------|
| J01151A0471              | Gold                 | front mounting<br>Einbau von vorne | Z01                      |
| J01151A0479              | Nickel               | front mounting<br>Einbau von vorne | Z01                      |

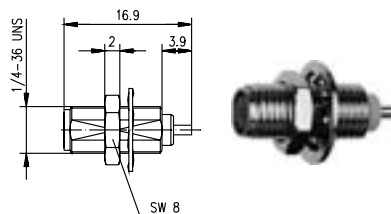
8.10

SMA Bulkhead Receptacle, female  
SMA-Einbaubuchse

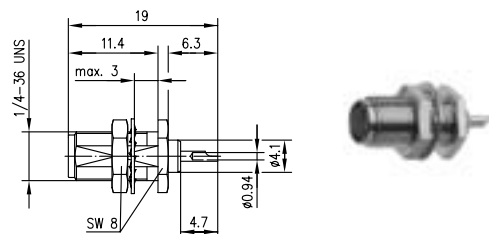
| Order No.<br>Bestell-Nr. | Finish<br>Oberfläche | Remarks<br>Anmerkungen   | Mount. dim.<br>Einbaumaß |
|--------------------------|----------------------|--|--------------------------|
| J01151A1071              | Gold                 | front mounting<br>Einbau von vorne                               | Z27                      |
| J01151A1081              | Gold                 | front mounting with panel seal<br>Einbau von vorne mit Dichtring | Z27                      |



| Order No.<br>Bestell-Nr. | Finish<br>Oberfläche | Mount. dim.<br>Einbaumaß |
|--------------------------|----------------------|--------------------------|
| J01151A0531              | Gold                 | Z36                      |



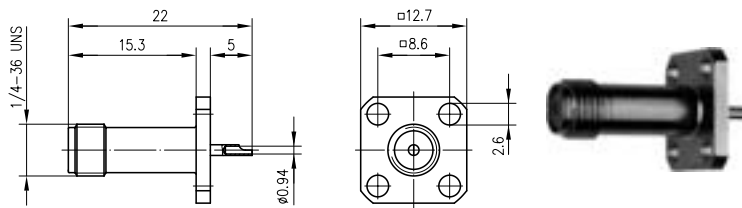
| Order No.<br>Bestell-Nr. | Finish<br>Oberfläche | Mount. dim.<br>Einbaumaß |
|--------------------------|----------------------|--------------------------|
| J01151A0741              | Gold                 | Z36                      |



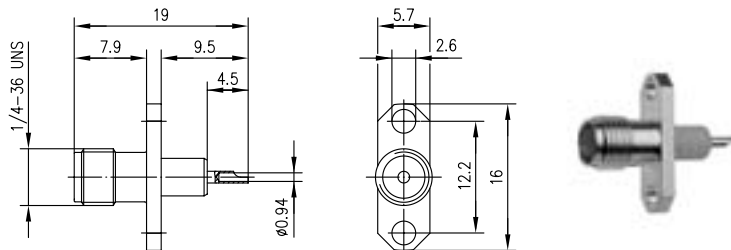
| Order No.<br>Bestell-Nr. | Finish<br>Oberfläche | Mount. dim.<br>Einbaumaß |
|--------------------------|----------------------|--------------------------|
| J01151A0891              | Gold                 | Z36                      |

SMA Panel Socket  
SMA-Einbaubuchse mit Flansch

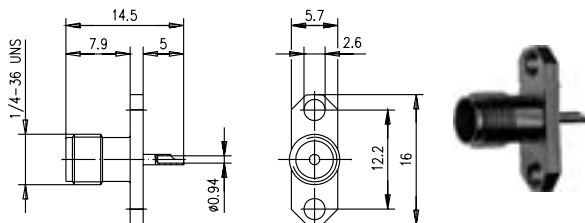
8.11



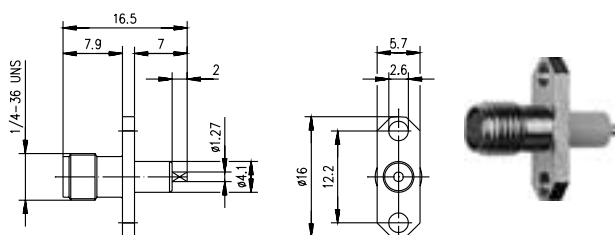
| Order No.<br>Bestell-Nr. | Finish<br>Oberfläche | Mount. dim.<br>Einbaumaß |
|--------------------------|----------------------|--------------------------|
| J01151A0161              | Gold                 | Z29                      |
| J01151A0169              | Nickel               | Z29                      |



| Order No.<br>Bestell-Nr. | Finish<br>Oberfläche   | Mount. dim.<br>Einbaumaß |
|--------------------------|------------------------|--------------------------|
| J01151A0151              | Gold                   | Z28                      |
| J01151A0159              | Tealloy (white bronze) | Z28                      |

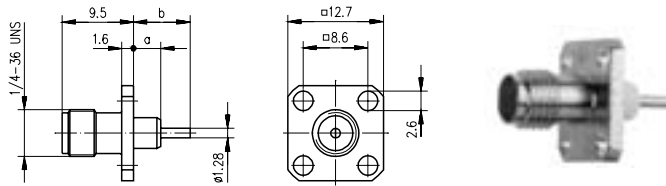


| Order No.<br>Bestell-Nr. | Finish<br>Oberfläche | Mount. dim.<br>Einbaumaß |
|--------------------------|----------------------|--------------------------|
| J01151A0141              | Gold                 | Z28                      |
| J01151A0149              | Nickel               | Z28                      |

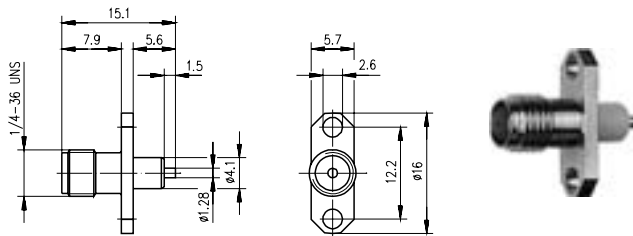


| Order No.<br>Bestell-Nr. | Finish<br>Oberfläche | Mount. dim.<br>Einbaumaß |
|--------------------------|----------------------|--------------------------|
| J01151A0721              | Gold                 | Z28                      |

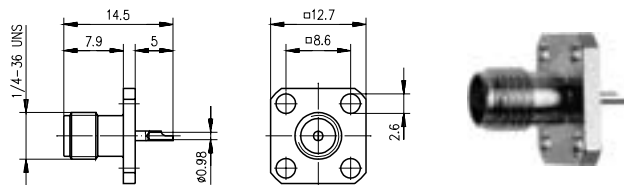
8.11

SMA Panel Socket  
SMA-Einbaubuchse mit Flansch

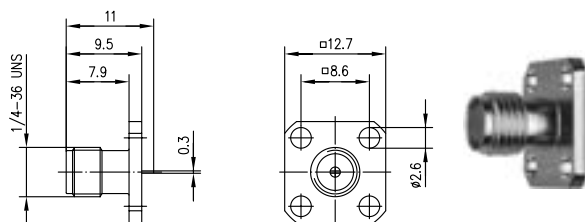
| Order No.<br>Bestell-Nr. | Finish<br>Oberfläche | Dimensions<br>Abmessungen | Mount. dim.<br>Einbaumaß |
|--------------------------|----------------------|---------------------------|--------------------------|
| J01151A0621              | Gold                 | a=3.6, b=7.5              | Z29                      |
| J01151A0641              | Gold                 | a=18, b=20.5              | Z29                      |



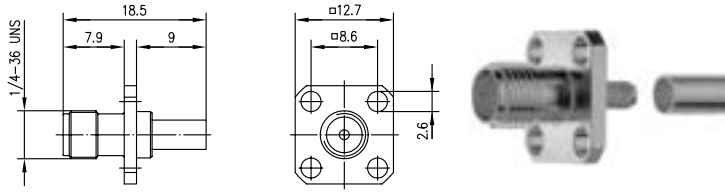
| Order No.<br>Bestell-Nr. | Finish<br>Oberfläche | Mount. dim.<br>Einbaumaß |
|--------------------------|----------------------|--------------------------|
| J01151A0631              | Gold                 | Z28                      |



| Order No.<br>Bestell-Nr. | Finish<br>Oberfläche | Mount. dim.<br>Einbaumaß |
|--------------------------|----------------------|--------------------------|
| J01151A0811              | Gold                 | Z29                      |



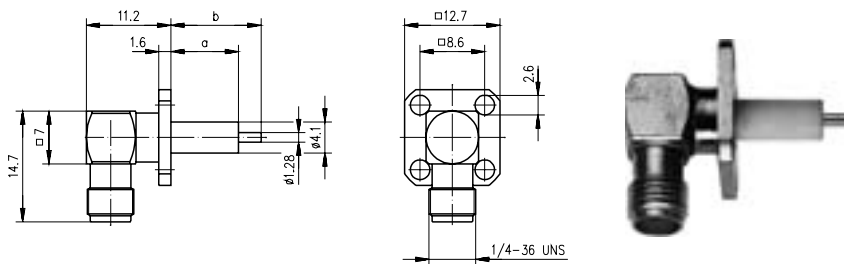
| Order No.<br>Bestell-Nr. | Finish<br>Oberfläche | Mount. dim.<br>Einbaumaß |
|--------------------------|----------------------|--------------------------|
| J01151A0851              | Gold                 | Z29                      |



| Order No.<br>Bestell-Nr. | Cable group; cable<br>Kabelgruppe; Kabel | Finish<br>Oberfläche | Mount. dim.<br>Einbaumaß | Assembly<br>Montage | Crimp die<br>Crimpeinsatz |
|--------------------------|--|----------------------|--------------------------|---------------------|---------------------------|
| J01151A1011              | G7 (RG-316/U)                            | Gold                 | Z29                      | C0703               | N01001A0009               |

**SMA Angle Panel Socket**  
**SMA-Winkeleinbaubuchse mit Flansch**

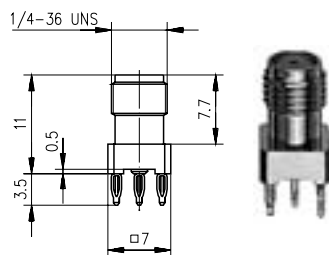
8.12



| Order No.<br>Bestell-Nr. | Finish<br>Oberfläche | Remarks<br>Anmerkungen           | Dimensions<br>Abmessungen | Mount. dim.<br>Einbaumaß |
|--------------------------|----------------------|----------------------------------|---------------------------|--------------------------|
| J01151A0651              | Gold                 |                                  | a=9, b=12                 | Z29                      |
| J01151A1141              | Gold                 | with panel seal<br>mit Dichtring | a=17, b=20                | Z29                      |

**SMA Receptacle, female, for Printed Circuits in Press-In Technology**  
**SMA-Buchse für gedruckte Schaltungen in Einpresstechnik**

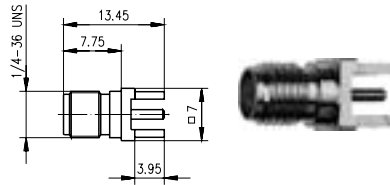
8.13



| Order No.<br>Bestell-Nr. | Finish<br>Oberfläche | Remarks<br>Anmerkungen   | Mount. dim.<br>Einbaumaß |
|--------------------------|----------------------|--|--------------------------|
| J01151A0331              | Gold                 | Further technical information on request<br>Weitere technische Informationen auf Anfrage | Z78                      |

## SMA Receptacle, female, for Printed Circuits

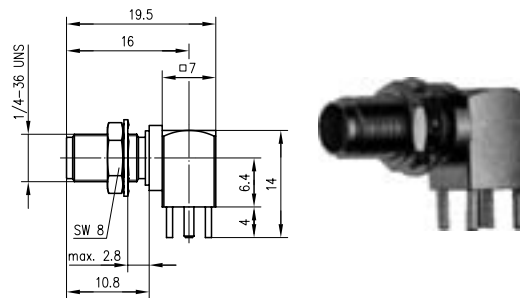
### SMA-Buchse für gedruckte Schaltungen



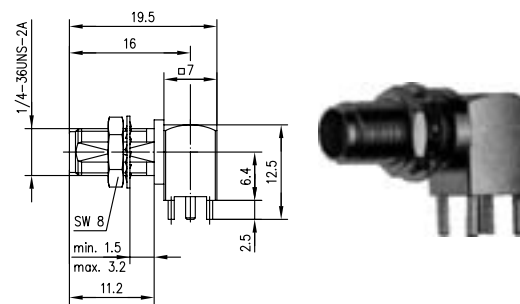
| Order No.<br>Bestell-Nr. | Finish<br>Oberfläche   | Mount. dim.<br>Einbaumaß |
|--------------------------|------------------------|--------------------------|
| J01151A0931              | Gold                   | Z79                      |
| J01151A0938              | Tealloy (white bronze) | Z79                      |

## SMA Angle Bulkhead Receptacle, female, for Printed Circuits

### SMA-Winkeleinbaubuchse für gedruckte Schaltungen

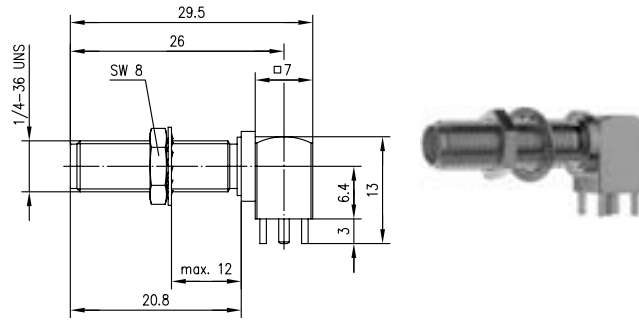


| Order No.<br>Bestell-Nr. | Finish<br>Oberfläche   | Mount. dim.<br>Einbaumaß |
|--------------------------|------------------------|--------------------------|
| J01151A0201              | Gold                   | Z25/Z55                  |
| J01151A0208              | Tealloy (white bronze) | Z25/Z55                  |



| Order No.<br>Bestell-Nr. | Finish<br>Oberfläche | Mount. dim.<br>Einbaumaß |
|--------------------------|----------------------|--------------------------|
| J01151A0821              | Gold                 | Z25/Z36                  |

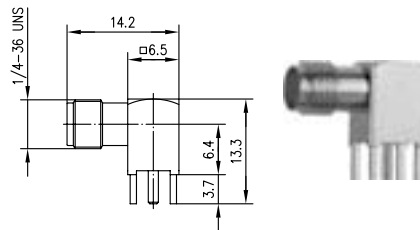




| Order No.<br>Bestell-Nr. | Finish<br>Oberfläche | Mount. dim.<br>Einbaumaß |
|--------------------------|----------------------|--------------------------|
| J01151A0921              | Gold                 | Z25/Z55                  |

**SMA Angle Receptacle, female, for Printed Circuits**  
**SMA-Winkelbuchse für gedruckte Schaltungen**

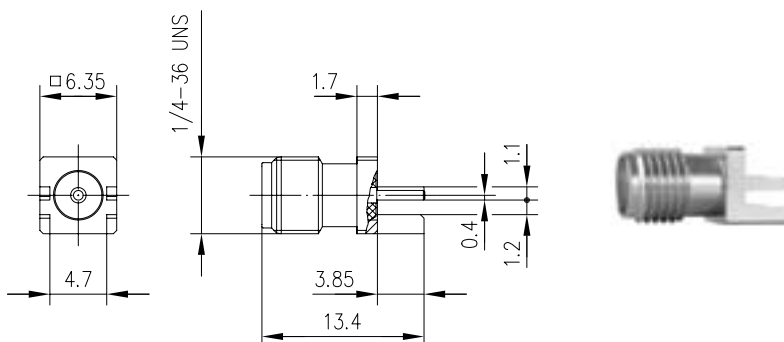
8.16



| Order No.<br>Bestell-Nr. | Finish<br>Oberfläche     | Mount. dim.<br>Einbaumaß |
|--------------------------|--------------------------|--------------------------|
| J01151A0191              | Gold                     | Z25                      |
| J01151A0198              | Tealalloy (white bronze) | Z25                      |

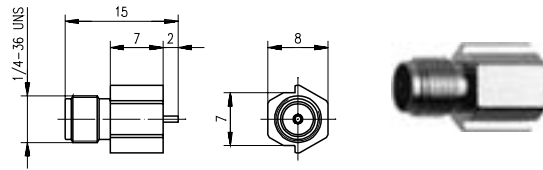
**SMA End Launcher for PCB**  
**SMA-End-Launch Buchse für Leiterplatten**

8.17



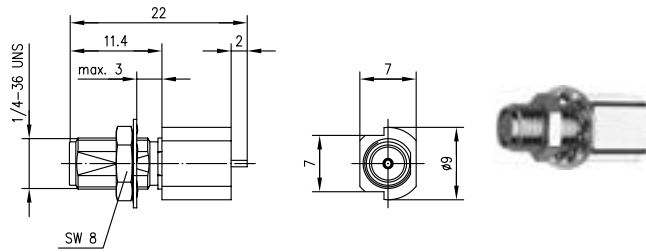
| Order No.<br>Bestell-Nr. | Remarks<br>Anmerkungen   |
|--------------------------|--|
| J01151A1201              | For PCB thickness 1.07mm/0.042"<br>Leiterplattenstärke 1.07mm/0.042" |

8.18

SMA Edge-Mount Jack in SMT  
SMA-Edge-Mount Buchse in SMT

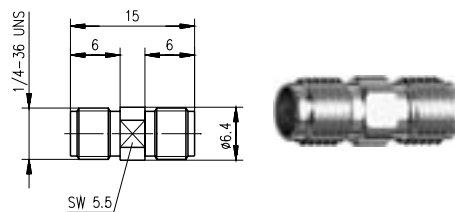
| Order No.<br>Bestell-Nr. | Finish<br>Oberfläche | Remarks<br>Anmerkungen | Mount. dim.<br>Einbaumaß |
|--------------------------|----------------------|------------------------|--------------------------|
| J01151A0411              | Gold                 | Edge-Mount-Type        | Z89                      |

8.19

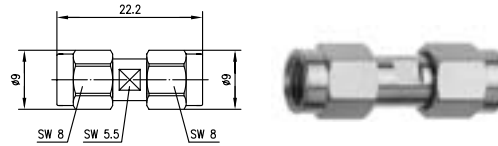
SMA-Edge-Mount Bulkhead Receptacle, female, in SMT  
SMA-Edge-Mount Einbaubuchse in SMT

| Order No.<br>Bestell-Nr. | Finish<br>Oberfläche | Mount. dim.<br>Einbaumaß |
|--------------------------|----------------------|--------------------------|
| J01151A0451              | Gold                 | Z36/Z97                  |

8.20

SMA Adaptor  
SMA-Kupplung

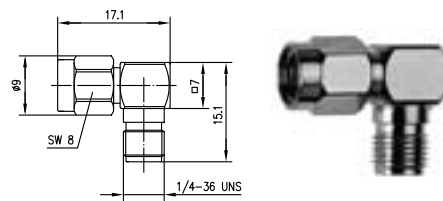
| Order No.<br>Bestell-Nr. | Finish<br>Oberfläche | Remarks<br>Anmerkungen | Return Loss<br>Return Loss |
|--------------------------|----------------------|------------------------|----------------------------|
| J01154A0001              | Gold                 | f-f<br>Bu-Bu           | 36 dB/1 GHz; 26 dB/6 GHz   |



| Order No.<br>Bestell-Nr. | Finish<br>Oberfläche | Remarks<br>Anmerkungen |
|--------------------------|----------------------|------------------------|
| J01154A0031              | Gold                 | m-m<br>Sti-Sti         |

**SMA Angle Adaptor**  
**SMA-Winkelkupplung**

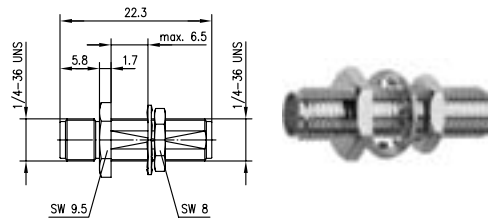
8.21



| Order No.<br>Bestell-Nr. | Finish<br>Oberfläche | Remarks<br>Anmerkungen | Return Loss<br>Return Loss |
|--------------------------|----------------------|------------------------|----------------------------|
| J01154A0021              | Gold                 | m-f<br>Sti-Bu          | 38 dB/1 GHz; 21 dB/6 GHz   |

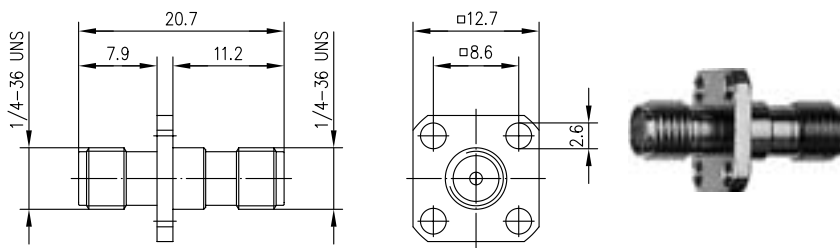
**SMA Bulkhead Adaptor**  
**SMA-Verbindungsstück**

8.22



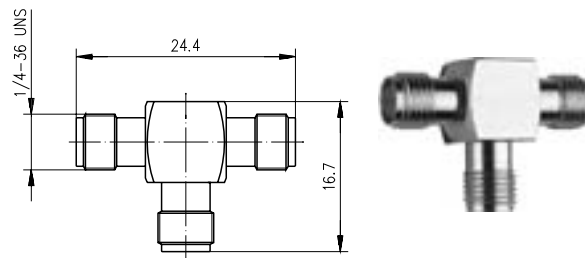
| Order No.<br>Bestell-Nr. | Finish<br>Oberfläche | Remarks<br>Anmerkungen | Mount. dim.<br>Einbaumaß | Return Loss<br>Return Loss |
|--------------------------|----------------------|------------------------|--------------------------|----------------------------|
| J01154A0041              | Gold                 | f-f<br>Bu-Bu           | Z36                      | 40 dB/1 GHz; 25 dB/6 GHz   |

## 8.23

SMA Panel Adaptor  
SMA-Einbaukupplung mit Flansch

| Order No.<br>Bestell-Nr. | Finish<br>Oberfläche | Remarks<br>Anmerkungen | Mount. dim.<br>Einbaumaß | Return Loss<br>Return Loss   |
|--------------------------|----------------------|------------------------|--------------------------|------------------------------|
| J01154A0011              | Gold                 | f-f<br>Bu-Bu           | Z29                      | 44.5 dB/1 GHz; 30.5 dB/4 GHz |
| J01154A0019              | Nickel               | f-f<br>Bu-Bu           | Z29                      | 44.5 dB/1 GHz; 30.5 dB/4 GHz |

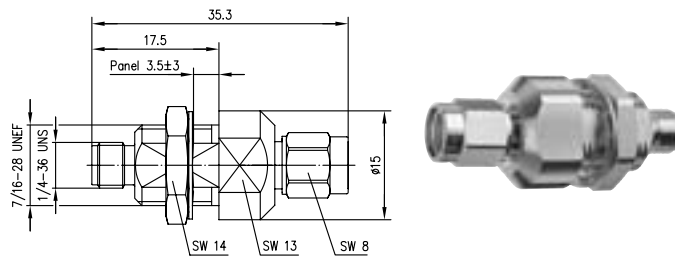
## 8.24

SMA T Adaptor  
SMA-T-Stück

| Order No.<br>Bestell-Nr. | Finish<br>Oberfläche | Remarks<br>Anmerkungen |
|--------------------------|----------------------|------------------------|
| J01155A0011              | Gold                 | f-f-f<br>Bu-Bu-Bu      |

SMA Surge Suppressor  
SMA Überspannungsableiter

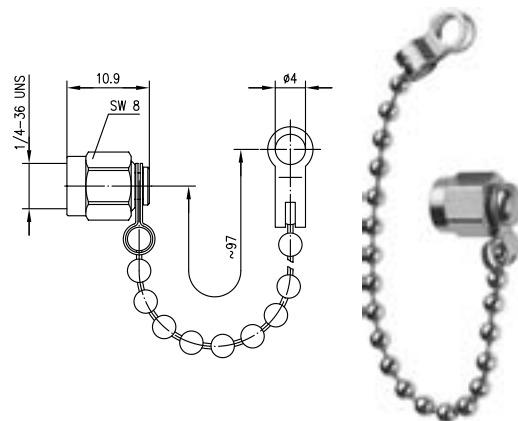
8.25



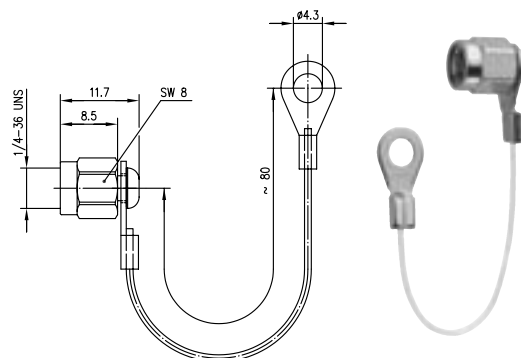
| Order No.<br>Bestell-Nr. | Technical Information<br>Technische Daten | Finish<br>Oberfläche | Remarks<br>Anmerkungen  | Mount. dim.<br>Einbaumaß |
|--------------------------|---|----------------------|---|--------------------------|
| J01158A0001              | 25 W; 150 V - 250 V<br>spark over voltage | Gold                 | m-f with gas discharge, frequency range up to 6 GHz,<br>bulkhead type<br>Sti-Bu mit Gasentladungsableiter; Frequenzbereich: 0-6 GHz;<br>Einbautyp | Z03                      |

SMA Dust Cap  
SMA-Abdeckkappe

8.26



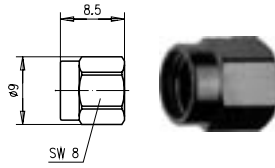
| Order No.<br>Bestell-Nr. | Finish<br>Oberfläche | Remarks<br>Anmerkungen                |
|--------------------------|----------------------|---------------------------------------|
| H00040A0011              | Gold                 | with chain, IP 68<br>mit Kette, IP 68 |



| Order No.<br>Bestell-Nr. | Finish<br>Oberfläche | Remarks<br>Anmerkungen                     |
|--------------------------|----------------------|--|
| H00040A0020              | Gold                 | nylon string, IP 68<br>Nylon-Schnur, IP 68 |

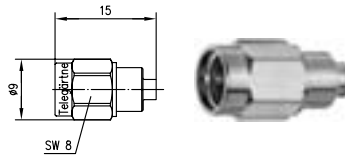
8.26

8.26

SMA Dust Cap  
SMA-Abdeckkappe

| Order No.<br>Bestell-Nr. | Finish<br>Oberfläche | Remarks<br>Anmerkungen |
|--------------------------|----------------------|------------------------|
| H00040A0001              | Gold                 | IP 68                  |

8.27

SMA Termination Plug  
SMA-Abschlusswiderstand

| Order No.<br>Bestell-Nr. | Finish<br>Oberfläche     | Max. Frequency<br>Max. Frequenz | Max. Power<br>Max. Leistung | Return Loss<br>Return Loss |
|--------------------------|--------------------------|---------------------------------|-----------------------------|----------------------------|
| J01152A0011              | Gold                     | 6 GHz                           | 1 W                         | 34 dB/2 GHz; 23 dB/6 GHz   |
| J01152A0018              | Telealloy (white bronze) | 6 GHz                           | 1 W                         | 34 dB/2 GHz; 23 dB/6 GHz   |
| J01152B0011              | Gold                     | 18 GHz                          | 1 W                         | 35 dB/2 GHz; 20 dB/18 GHz  |
| J01152B0018              | Telealloy (white bronze) | 18 GHz                          | 1 W                         | 35 dB/2 GHz; 20 dB/18 GHz  |