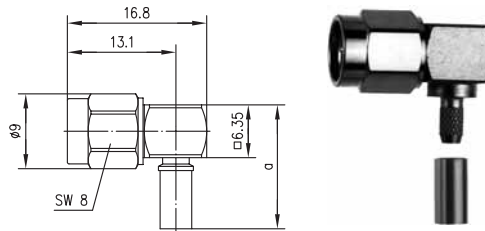


SMA Angle Plug Crimp

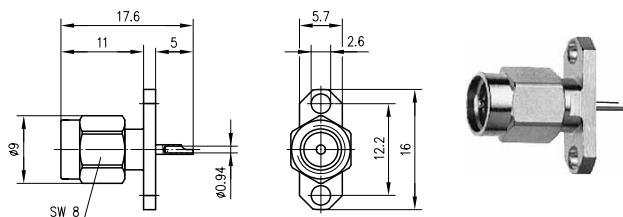
SMA-Kabelwinkelstecker Crimp



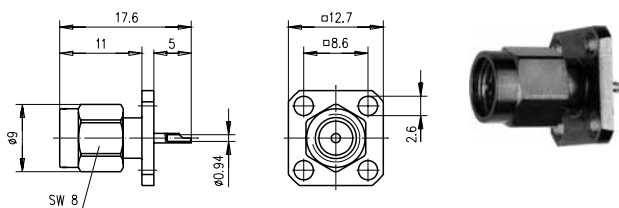
Order no. Bestell-Nr.	Cable group; cable Kabelgruppe; Kabel	Finish Oberfläche	Dimensions Abmessungen	Assembly Montage	Crimp die Crimpeinsatz
J01150A0541	G3 (RG-178B/U)	Gold (Standard)	a=14.9	C0413	N01001A0010
J01150A0549	G3 (RG-178B/U)	Nickel	a=14.9	C0413	N01001A0010
J01150A0551	K 01252D	Gold (Standard)	a=14.9	C0413	N01001A0010
J01150A0061	G7 (RG-316/U)	Gold (Standard)	a=14.9	C0403	N01001A0009
J01150A0068	G7 (RG-316/U)	Telealloy (white bronze)	a=14.9	C0403	N01001A0009
J01150A0069	G7 (RG-316/U)	Nickel	a=14.9	C0403	N01001A0009
J01150A0071	G8 (RD-316)	Gold (Standard)	a=14.9	C0414	N01001A0014
J01150A0078	G8 (RD-316)	Telealloy (white bronze)	a=14.9	C0414	N01001A0014
J01150A0079	G8 (RD-316)	Nickel	a=14.9	C0414	N01001A0014
J01150A0091	G1 (RG-58C/U)	Gold (Standard)	a=20.9	C0405	N01001A0005
J01150A0099	G1 (RG-58C/U)	Nickel	a=20.9	C0405	N01001A0005
J01150A0081	G5 (RG-223/U); RG-142B/U; 1.0/2.95 AF	Gold (Standard)	a=21.4	C0405	N01001A0005
J01150A0088	G5 (RG-223/U); RG-142B/U; 1.0/2.95 AF	Telealloy (white bronze)	a=21.4	C0405	N01001A0005
J01150A0089	G5 (RG-223/U); RG-142B/U; 1.0/2.95 AF	Nickel	a=21.4	C0405	N01001A0005
J01150A0521	G30 (1.5/3.8); LMR-240	Gold (Standard)	a=21.9	C0406	N01001A0007

SMA Panel Receptacle, male

SMA-Einbaustecker mit Flansch



Order no. Bestell-Nr.	Finish Oberfläche	Assembly Montage
J01150A0161	Gold (Standard)	Z28
J01150A0169	Nickel	Z28



Order no. Bestell-Nr.	Finish Oberfläche	Assembly Montage
J01150A0191	Gold (Standard)	Z29
J01150A0199	Nickel	Z29