

## MMCX

### MMCX

#### Contents

11.1	MMCX Straight Plug Crimp	213
11.2	MMCX Angle Plug	213
11.3	MMCX Angle Plug Crimp	214
11.4	MMCX PCB Receptacle, male, in SMT	214
11.5	MMCX Straight Jack	215
11.6	MMCX Bulkhead Receptacle, female	215
11.7	MMCX PCB Receptacle, female	215
11.8	MMCX Angle PCB Receptacle, female	216
11.9	MMCX PCB Receptacle, female, in SMT	216
11.10	MMCX Angle PCB Receptacle, female, in SMT	217

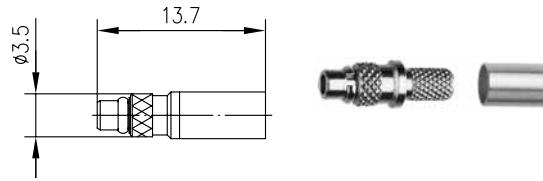
#### Übersicht

11.1	MMCX- Kabelstecker Crimp	213
11.2	MMCX- Kabelwinkelstecker	213
11.3	MMCX- Kabelwinkelstecker Crimp	214
11.4	MMCX- Stecker in SMT	214
11.5	MMCX- Kabelbuchse	215
11.6	MMCX-Einbaubuchse	215
11.7	MMCX- Anbaubuchse für gedruckte Schaltungen	216
11.8	MMCX- Winkelbuchse für gedruckte Schaltungen	216
11.9	MMCX-Buchse in SMT	
11.10	MMCX- Winkelbuchse in SMT	217

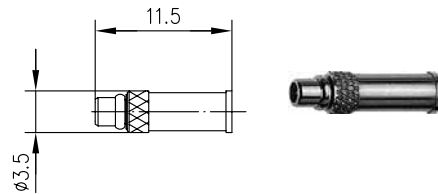


**MMCX Straight Plug Crimp**  
**MMCX- Kabelstecker Crimp**

11.1



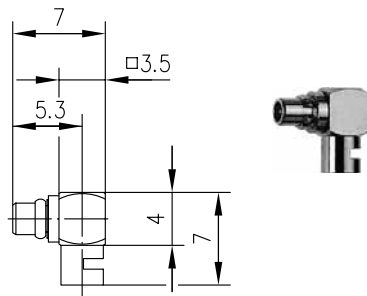
Order no. Bestell-Nr.	Cable group; cable Kabelgruppe; Kabel	Remarks Anmerkungen	Assembly Montage	Crimp die Crimpeinsatz
J01340A0141	G7 (RG- 316/U)	crimp/crimp	C3216	N01001A0009
J01340A0151	G8 (RD-316)	crimp/crimp	C3214	N01001A0014



Order-Nr. Bestell-Nr.	Cable group; cable Kabelgruppe; Kabel	Remarks Anmerkungen	Assembly Montage	Crimp die Crimpeinsatz
J01340A0001	G3 (RG-178B/U)	crimp/crimp	C2822	N01001A0018
J01340A0031	G11 (UT-85)	crimp/solder crimp/löt	C20	N01001A0010

**MMCX Angle Plug**  
**MMCX- Kabelwinkelstecker**

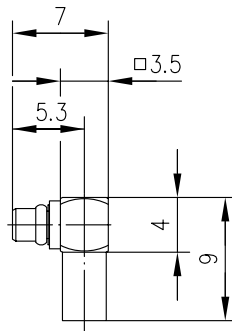
11.2



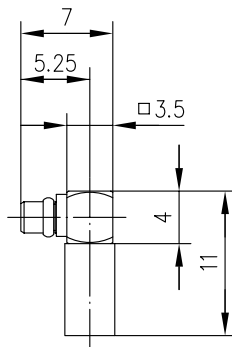
Order-Nr. Bestell-Nr.	Cable group; cable Kabelgruppe; Kabel	Remarks Anmerkungen	Assembly Montage
J01340A0061	G34 (UT-47)	solder/solder löt/löt	C21
J01340A0021	G11 (UT-85)	solder/solder löt/löt	C21
J01340A0161	G43 (0.24/0.68); FCCA3 Nissei	solder/solder löt/löt	C23
J01340A0131	G3 (RG-178B/U)	solder/solder löt/löt	C23

## 11.3

### MMCX Angle Plug Crimp MMCX-Kabelwinkelstecker Crimp



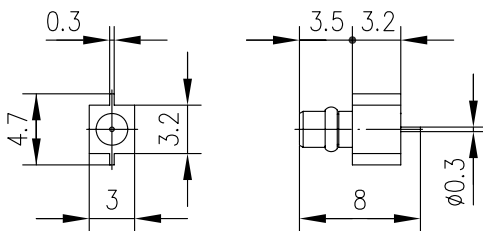
Order no. Bestell-Nr.	Cable group; cable Kabelgruppe; Kabel	Remarks Anmerkungen	Assembly Montage	Crimp die Crimpeinsatz
J01340A0011	G3 (RG-178B/U)	solder/crimp löt/crimp	C2922	N01001A0018



Order no. Bestell-Nr.	Cable group; cable Kabelgruppe; Kabel	Remarks Anmerkungen	Assembly Montage	Crimp die Crimpeinsatz
J01340A0121	G3 (RG-178B/U)	solder/crimp löt/crimp	C3117	N01001A0010
J01340A0071	K01252D	solder/crimp löt/crimp	C3117	N01001A0010
J01340A0051	G7 (RG-316/U)	solder/crimp löt/crimp	C3116	N01001A0009
J01340A0111	G8 (RD-316)	solder/crimp löt/crimp	C3114	N01001A0014

## 11.4

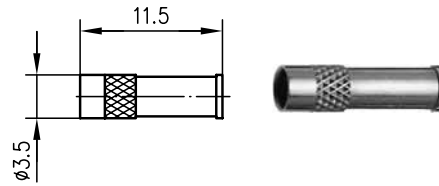
### MMCX PCB Receptacle, male, in SMT MMCX-Stecker in SMT



Order no. Bestell-Nr.	Remarks Anmerkungen	Mount. dim. Einbaumaß
J01340A0041	Edge-Mount-Type	Z84

**MMCX Straight Jack  
MMCX-Kabelbuchse**

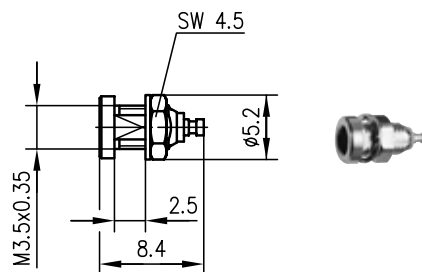
11.5



Order no. Bestell-Nr.	Cable group; cable Kabelgruppe; Kabel	Assembly Montage	Crimp die Crimpeinsatz
J01341A0051	G3 (RG-178B/U); AA-8580	C2822	N01001A0018

**MMCX Bulkhead Receptacle, female  
MMCX-Einbaubuchse**

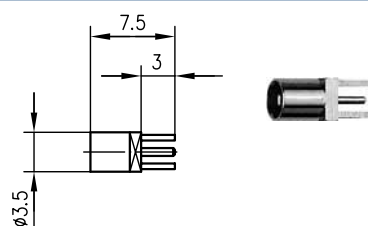
11.6



Order no. Bestell-Nr.	Remarks Anmerkungen	Mount. dim. Einbaumaß
J01341A0041	front mounting Einbau von vorne	Z22

**MMCX PCB Receptacle, female  
MMCX-Anbaubuchse für gedruckte Schaltungen**

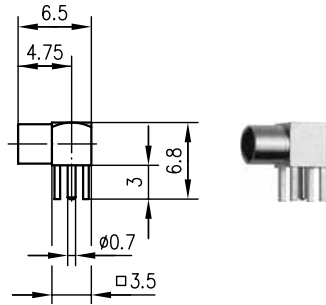
11.7



Order no. Bestell-Nr.	Mount. dim. Einbaumaß
J01341A0021	Z23

## 11.8

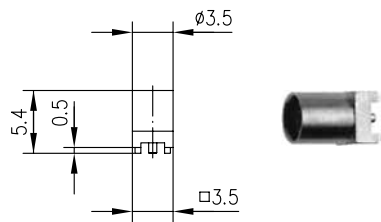
### MMCX Angle PCB Receptacle, female MMCX-Winkelbuchse für gedruckte Schaltungen



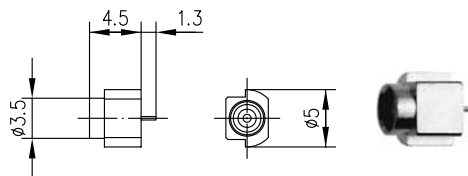
Order no. Bestell-Nr.	Mount. dim. Einbaumaß
J01341A0031	Z23

## 11.9

### MMCX PCB Receptacle, female, in SMT MMCX-Buchse in SMT



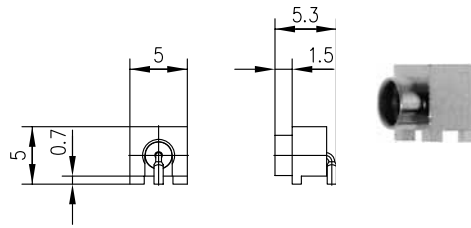
Order no. Bestell-Nr.	Mount. dim. Einbaumaß
J01341A0091	Z90



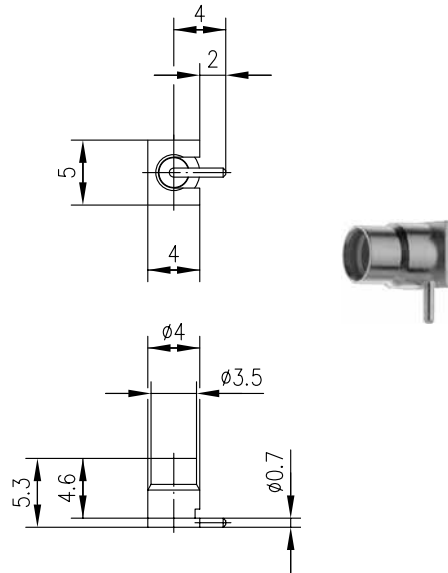
Order no. Bestell-Nr.	Remarks Anmerkungen	Mount. dim. Einbaumaß
J01341A0081	Edge-Mount Type	Z91
J01341C0081	tape-and-reel packed acc. to DIN IEC 286-3, 1500 pcs. per reel Blistergurtverpackung gemäß DIN IEC 286-3, 1500 Stk. pro Spule	Z91

**MMCX Angle PCB Receptacle, female, in SMT**  
**MMCX-Winkelbuchse in SMT**

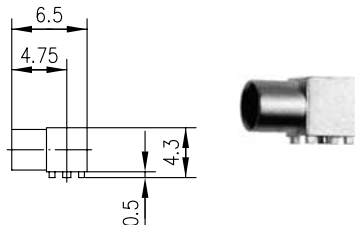
11.10



Order no. Bestell-Nr.	Remarks Anmerkungen	Mount. dim. Einbaumaß
J01341A0071	-	Z88
J01341C0071	tape and reel packed on reel acc. to DIN IEC 286-3, 1700 pcs. per reel Blistergurtverpackung gemäß DIN IEC 286-3, 1700 Stk. pro Spule	Z88



Order no. Bestell-Nr.	Remarks Anmerkungen	Mount. dim. Einbaumaß
J01341A0001	for PCBs für Leiterplatten	on request auf Anfrage
J01341C0001	tape and reel packed on reel acc. to DIN IEC 286-3, 1000 pcs. per reel Blistergurtverpackung gemäß DIN IEC 286-3, 1000 Stk. pro Spule	on request auf Anfrage



Order no. Bestell-Nr.	Mount. dim. Einbaumaß
J01341A0061	Z90