

Tools and materials required:

Soldering iron, Solder
 Alcohol, brush
 Stanley blade, flat nosed pliers
 Locator tool No. W 62
 Soldering No. 58
 Inserts No. W 59
 Tip trimmer No. W 164
 Trim tool No. W 63 (optional)
 Positioner No. W 81 (for W 164)

This connector is supplied
 in 2 parts.
 No contact and insulator supplied.

Straight connector for copper jacket cable

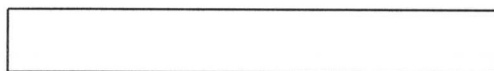
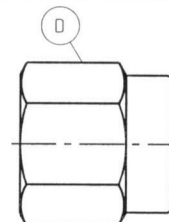
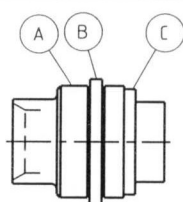
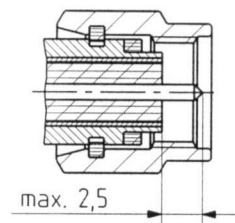
Cable entry: soldered, without contact pin and insulator

Connector types: (e.g.)

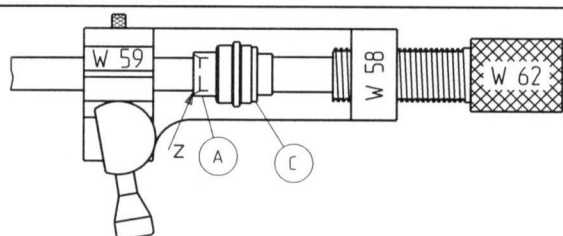
11_SMA-50-3-14 / Kabel EZ 141, (141")

11_SMA-50-3-16 / Kabel EZ 141, (141")

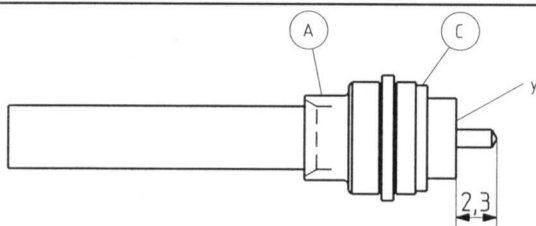
SMA plug interface dimensions



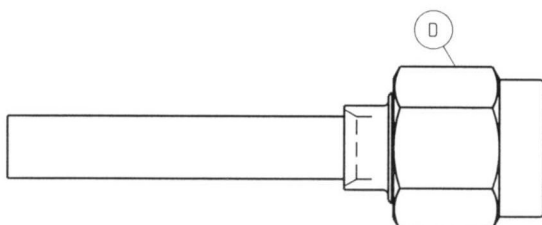
Cut end of semi rigid cable in a plane perpendicular to the cable axis.



IMPORTANT: Remove gasket C from connector housing A prior to soldering. Slide connector housing A onto cable. Place cable in soldering fixture W 58 and fix between inserts W 59. Tighten locator tool W 62 completely against cable end. Push connector housing A completely against locator tool W 62. Solder connector housing A to cable by Z, avoid excessive heat, immediately cool down and clean with alcohol.



Cut off dielectric and copper jacket at plane y using a blade. To remove excessive solder, use trim tool W 63. Form tip of inner conductor to a 90° cone using tip trimmer W 164. Check dimension 2,3mm. Mount gasket C on connector housing A.



Press connector housing A into nut D until spring washer B engages. Use tools W 164 and W 81 for this operation. A slight rotary action might be necessary.

SUHNER's skilled staff and specialised equipment are available to carry out complete R.F.lead-assembly on your behalf. We mount your connectors on cables at economic prices! Please contact our representative for further details of this service



HUBER + SUHNER AG CH-9100 HERISAU

Deutscher Text: siehe Rückseite