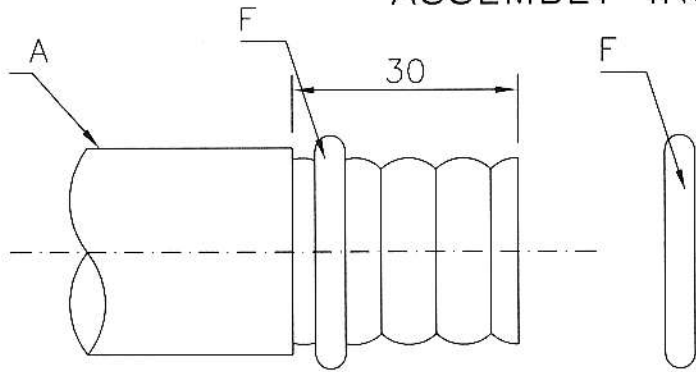
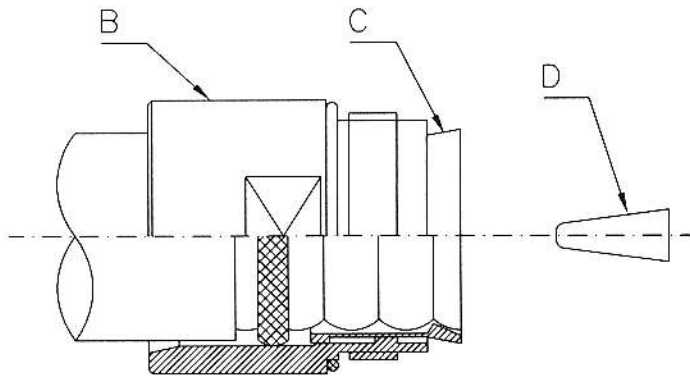


# ASSEMBLY INSTRUCTIONS



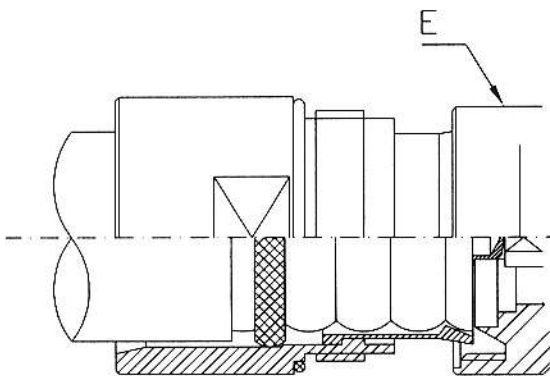
1. The cable (A) has to be straightened for a length of 150 mm and the jacket has to be cutted for a length of 30 mm.

ATTENTION: the cable must be cutted on the top of a wave of the outer conductor



2. Inserting Oring (f) into the cable (A)

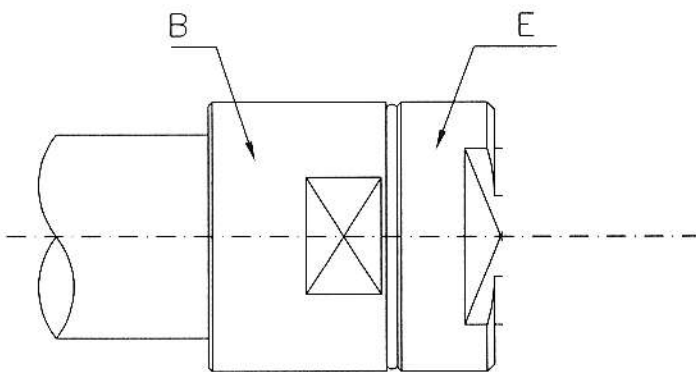
3. The cable clamp (B) has to be inserted till the elastic bushing (C) is fixed into the first groove of the outer conductor. Insert into the inner conductor the antihumidity cap (D).



4. Bring near the connector body (E) cheking that inner male contact enters straight into the hole of inner conductor.

ATTENTION: insert the body (E) till to the shoulder stop on the cable (A).

5. The cable clamp (B) must be threaded on the body (E) tightening it with spanners. ATTENTION: keep held the body (E) while thread the cable clamp (B).



5. The connector must be sealed with the proper paste through the hole (F). Close the same with the grub-screw (G).

ATTENTION: fill with the sealing paste till it starts to come out from the vent hole.

DESCRIZIONE CONNETTORE 7/8 PER CAVO 7/8" FOAM  
DESCRIPTION EIA 7/8 CONNECTOR FOR 7/8" FOAM CABLE

NOTE/NOTES

SCALA/SCALE

DATA/DATE

QUESTO DISEGNO E' DI ESCLUSIVA PROPRIETA' DELLA BELCO S.p.A. E NON PUO' ESSERE RIPRODOTTO O DUPLICATO NE' UTILIZZATO PER LA COSTRUZIONE DI QUESTO PARTICOLARE SENZA LA NOSTRA AUTORIZZAZIONE SCRITTA.

REV./REV.

CODICE/CODE

0714

THIS DRAWING IS THE SOLE PROPERTY OF BELCO S.p.A. AND CANNOT BE REPRODUCED OR PUBLISHED NOR UTILIZED TO MANUFACTURE THIS ITEM WITHOUT OUR WRITTEN AUTHORIZATION.

**BELCO**  
APPARECCHIATURE  
COMPONENTI  
ELETTRONICI